

*Usha Shriram has been awarded the
'Trusted Brand 2019'
for Wires & Cables by Reader's Digest*



"TRUSTED BRAND 2019" By Reader's Digest

*Usha Shriram has been awarded the
'Trusted Brand 2019'
for Wires & Cables by Reader's Digest*



We are extremely happy and proud to announce that USHA SHRIRAM has been awarded the "TRUSTED BRAND 2019" by Reader's Digest under the product category - Wires & Cables.

The Usha Shriram Enterprises guiding mantra is Innovation, Adaption and Consumer Satisfaction. This has not only ensured market supremacy for the brand but also brought customer and industry recognition by way of the coveted 'Trusted Brand' Award.

The Usha Shriram Brand legacy, with effective, simple, user-friendly product lines, reaches out to customers from every walk of life with great new designs and new, innovative add-on features.

Tested for all necessary Indian and international standards in its well-equipped facility, the Company's products are being exported to countries in the Middle East and Africa also.

This singular reputation, built over decades of supplying quality products, followed by excellent customer service to guarantee consumer satisfaction, has brought happiness into homes.

Our effort to understand the diverse changing and growing needs of our customers is reflected in the relentless research that backs the innovative aesthetic designs of our rich, variegated product lines. Our Lighting, Pressure Cookers and Cookware, Water and Air Purifiers, Mobile Phones, Solar Products, Furniture, Mattresses, Luggage, CCTV Cameras, TV and Accessories, Wires and Cables and PVC Conduit Pipes among others, all endorse our motto, 'Bring Home Happiness' and enrich thousands of homes.

Usha Shriram offers electrical wires for different segments in the market. Each wire is manufactured to the highest standards and carries the appropriate certifications. We are grateful to our customers and Reader's Digest for recognizing our relentless efforts towards highest quality standards and customer satisfaction and bestowing on us the 'Trusted Brand' Award.

Surface Panels and Concealed Lights.

New

In continuation of our efforts to bring in new, Eco friendly and technologically superior products to the market, we have recently launched a new range of Surface Panels and Concealed Lights. These modern lighting fixture are designed to replace the usual fluorescent ceiling lights. They would be one of the best lighting options for indoor settings considering its modern design that gives better illumination, flexibility in design, efficient light quality, use of great material, extremely long usability span, highly durable, different color option, and capability to suit multiple applications, etc.

Surface Panels :

The new surface panels have a slim construction and smooth light distribution. These lights are designed specially to cater to Indian Power Conditions operating over wide range of voltages and offering protection from high voltage surges. These are available in round shape in 8 and 15 W.

Advantages of Slim Panels :

- Uses best material for high brightness
- Designed for Indian conditions
- Efficient heat management
- Superior quality LED with LM 80 tested LED technology
- Ensures long life
- Shock-resistant
- Environmental friendly
- Low lumen depreciation

Concealed Lights:

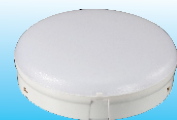
Concealed LED cove fixtures are ideal for bringing out a room's architectural features, and for providing a comforting, gentle layer of lighting in a space. These are available in 3 and 5 W.

Advantages of Concealed Light :

- Specially designed for junction boxes
- Aluminium heat sink for better heat dissipation
- Driver with voltage protection
- Soft and glare free light with high efficiency diffuser optics



Surface Panel



Terra CMP
(8/ 15 W)

Slim Panels

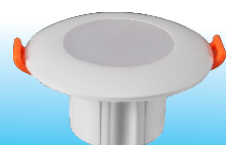


Terra SLP Round
(6 / 12 / 18 W)

Slim Panels



Terra SLP Square
(6 / 12 / 18 W)



Concealed Light
(3 / 5 W)

On - Grid Invertor

New



Our Brand Licencee for Solar Products, M/S Ankur Traders & Engineers Pvt. Ltd. have recently launched On - Grid Inverters in the market under 'EUROLEX' brand with technology support from a renowned 40 billion dollar Multinational company.

Following are some unique features of this product:

- Varied Range 2 KVA - 200 KVA
- Inbuilt SPDs On AC and DC Side
- DC overloading of 35% is permissible
- Bluetooth - Mobile App makes the Monitoring Easy and Free
- DC Disconnect switch and RS485 will be loved by EPC Players
- Ultra modern design with aluminum heat exchangers
- Technology support from a 40 BN dollar company
- Warranties Extendable upto 25 Years
- Higher Efficiencies and Output
- Maintenance Free, Easy to Install and Easy to use with On-Line / On-Site support

On-Grid
Invertors



Solar Panel & Solar Street Light Installation

Our EPC players all over India have been Installing various range of solar plants :

- Off-Grid Plants
- On-Grid Plants on Roof-Top
- On-Grid Elevated Roof-Top Plants
- Hybrid Solar Plants



The North - Eastern part of India is now being illuminated by USHA SHRIRAM Solar Street Lights with our partner UMANG Enterprises being very proactive in the area.

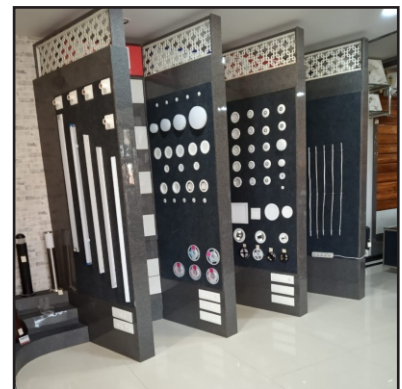


Punjab's Gurdaspur district is again on top among the USHA SHRIRAM solar product world with highest number of solar power plant installations under the leadership of DINKAR PV technologies.

New Showroom at Deoria (U.P)



Shri. R.S.Distributors, our Principal Distributors for East U.P and our Brand Licensee for wires and cables have set up a grand new showroom "Parth" at Deoria. The official grand opening and ribbon cutting ceremony was held on 28th April 2019, in the presence of Mr. S.S Sandhu (Executive Director Usha Shriram Enterprises Pvt. Ltd) & Mr. Rajeev Ahuja (DGM Sales & Marketing), Mr. K.K Tibrewal and Mr. Gyan Roongta (Proprietor Shri R.S Distributors). The showroom displays a wide range of Usha Shriram and Eurolex products especially lighting range and appliances and fans. Located in the center of the town, the showroom is accessible from every corner and remains open round the day.



Anniversary Gift Scheme

A memorable get together & night stay at “The DNG Grand Hotel (Kanpur) was organized by our Super Stockiest M/s. All Mega Mart. This stay was organized on achievement of targets by dealers and distributors. A small motivational session by Mr. K.K Tibrewal of Shyam Electrical Appliances and Mr. Hari Gupta and Mr. Rajesh Agarwal of All Mega Mart was followed by felicitation with certificates and dinner . It was a truly enjoyable evening for all. Everyone had a very great time and were very happy with the hospitality.



Trip To Hyderabad

Our Kanpur distributor, M/s. All Mega Mart, organized a trip to Hyderabad for its leading dealers along with their family. 40 people availed of this opportunity and had a great time in Hyderabad.



P R Activity for USHA SHRIRAM T.V Launch

उषा श्रीराम ने अपने बेहद आकर्षक एलईडी टीवी रेंज का किया विस्तार

नई दिल्ली। पिछले कई वर्षों में टी.वी. के कम्यूनिटी अर्थ का अर्थ बन चुका है। आज के जमाने में टी.वी. को केवल मनोरंजन के लिए नहीं, बल्कि सूचना के माध्यम के रूप में भी देखा जाता है। उषा श्रीराम ने इस सोच को ध्यान में रखते हुए अपने एलईडी टीवी रेंज का विस्तार किया है।

उषा श्रीराम ने अपने एलईडी टीवी रेंज का विस्तार किया है। इस रेंज में 32, 39, 46, 50, 55, 60, 65, 70, 75, 80, 85, 90, 95, 100, 110, 120, 130, 140, 150, 160, 170, 180, 190, 200, 210, 220, 230, 240, 250, 260, 270, 280, 290, 300, 310, 320, 330, 340, 350, 360, 370, 380, 390, 400, 410, 420, 430, 440, 450, 460, 470, 480, 490, 500, 510, 520, 530, 540, 550, 560, 570, 580, 590, 600, 610, 620, 630, 640, 650, 660, 670, 680, 690, 700, 710, 720, 730, 740, 750, 760, 770, 780, 790, 800, 810, 820, 830, 840, 850, 860, 870, 880, 890, 900, 910, 920, 930, 940, 950, 960, 970, 980, 990, 1000, 1010, 1020, 1030, 1040, 1050, 1060, 1070, 1080, 1090, 1100, 1110, 1120, 1130, 1140, 1150, 1160, 1170, 1180, 1190, 1200, 1210, 1220, 1230, 1240, 1250, 1260, 1270, 1280, 1290, 1300, 1310, 1320, 1330, 1340, 1350, 1360, 1370, 1380, 1390, 1400, 1410, 1420, 1430, 1440, 1450, 1460, 1470, 1480, 1490, 1500, 1510, 1520, 1530, 1540, 1550, 1560, 1570, 1580, 1590, 1600, 1610, 1620, 1630, 1640, 1650, 1660, 1670, 1680, 1690, 1700, 1710, 1720, 1730, 1740, 1750, 1760, 1770, 1780, 1790, 1800, 1810, 1820, 1830, 1840, 1850, 1860, 1870, 1880, 1890, 1900, 1910, 1920, 1930, 1940, 1950, 1960, 1970, 1980, 1990, 2000, 2010, 2020, 2030, 2040, 2050, 2060, 2070, 2080, 2090, 2100, 2110, 2120, 2130, 2140, 2150, 2160, 2170, 2180, 2190, 2200, 2210, 2220, 2230, 2240, 2250, 2260, 2270, 2280, 2290, 2300, 2310, 2320, 2330, 2340, 2350, 2360, 2370, 2380, 2390, 2400, 2410, 2420, 2430, 2440, 2450, 2460, 2470, 2480, 2490, 2500, 2510, 2520, 2530, 2540, 2550, 2560, 2570, 2580, 2590, 2600, 2610, 2620, 2630, 2640, 2650, 2660, 2670, 2680, 2690, 2700, 2710, 2720, 2730, 2740, 2750, 2760, 2770, 2780, 2790, 2800, 2810, 2820, 2830, 2840, 2850, 2860, 2870, 2880, 2890, 2900, 2910, 2920, 2930, 2940, 2950, 2960, 2970, 2980, 2990, 3000, 3010, 3020, 3030, 3040, 3050, 3060, 3070, 3080, 3090, 3100, 3110, 3120, 3130, 3140, 3150, 3160, 3170, 3180, 3190, 3200, 3210, 3220, 3230, 3240, 3250, 3260, 3270, 3280, 3290, 3300, 3310, 3320, 3330, 3340, 3350, 3360, 3370, 3380, 3390, 3400, 3410, 3420, 3430, 3440, 3450, 3460, 3470, 3480, 3490, 3500, 3510, 3520, 3530, 3540, 3550, 3560, 3570, 3580, 3590, 3600, 3610, 3620, 3630, 3640, 3650, 3660, 3670, 3680, 3690, 3700, 3710, 3720, 3730, 3740, 3750, 3760, 3770, 3780, 3790, 3800, 3810, 3820, 3830, 3840, 3850, 3860, 3870, 3880, 3890, 3900, 3910, 3920, 3930, 3940, 3950, 3960, 3970, 3980, 3990, 4000, 4010, 4020, 4030, 4040, 4050, 4060, 4070, 4080, 4090, 4100, 4110, 4120, 4130, 4140, 4150, 4160, 4170, 4180, 4190, 4200, 4210, 4220, 4230, 4240, 4250, 4260, 4270, 4280, 4290, 4300, 4310, 4320, 4330, 4340, 4350, 4360, 4370, 4380, 4390, 4400, 4410, 4420, 4430, 4440, 4450, 4460, 4470, 4480, 4490, 4500, 4510, 4520, 4530, 4540, 4550, 4560, 4570, 4580, 4590, 4600, 4610, 4620, 4630, 4640, 4650, 4660, 4670, 4680, 4690, 4700, 4710, 4720, 4730, 4740, 4750, 4760, 4770, 4780, 4790, 4800, 4810, 4820, 4830, 4840, 4850, 4860, 4870, 4880, 4890, 4900, 4910, 4920, 4930, 4940, 4950, 4960, 4970, 4980, 4990, 5000, 5010, 5020, 5030, 5040, 5050, 5060, 5070, 5080, 5090, 5100, 5110, 5120, 5130, 5140, 5150, 5160, 5170, 5180, 5190, 5200, 5210, 5220, 5230, 5240, 5250, 5260, 5270, 5280, 5290, 5300, 5310, 5320, 5330, 5340, 5350, 5360, 5370, 5380, 5390, 5400, 5410, 5420, 5430, 5440, 5450, 5460, 5470, 5480, 5490, 5500, 5510, 5520, 5530, 5540, 5550, 5560, 5570, 5580, 5590, 5600, 5610, 5620, 5630, 5640, 5650, 5660, 5670, 5680, 5690, 5700, 5710, 5720, 5730, 5740, 5750, 5760, 5770, 5780, 5790, 5800, 5810, 5820, 5830, 5840, 5850, 5860, 5870, 5880, 5890, 5900, 5910, 5920, 5930, 5940, 5950, 5960, 5970, 5980, 5990, 6000, 6010, 6020, 6030, 6040, 6050, 6060, 6070, 6080, 6090, 6100, 6110, 6120, 6130, 6140, 6150, 6160, 6170, 6180, 6190, 6200, 6210, 6220, 6230, 6240, 6250, 6260, 6270, 6280, 6290, 6300, 6310, 6320, 6330, 6340, 6350, 6360, 6370, 6380, 6390, 6400, 6410, 6420, 6430, 6440, 6450, 6460, 6470, 6480, 6490, 6500, 6510, 6520, 6530, 6540, 6550, 6560, 6570, 6580, 6590, 6600, 6610, 6620, 6630, 6640, 6650, 6660, 6670, 6680, 6690, 6700, 6710, 6720, 6730, 6740, 6750, 6760, 6770, 6780, 6790, 6800, 6810, 6820, 6830, 6840, 6850, 6860, 6870, 6880, 6890, 6900, 6910, 6920, 6930, 6940, 6950, 6960, 6970, 6980, 6990, 7000, 7010, 7020, 7030, 7040, 7050, 7060, 7070, 7080, 7090, 7100, 7110, 7120, 7130, 7140, 7150, 7160, 7170, 7180, 7190, 7200, 7210, 7220, 7230, 7240, 7250, 7260, 7270, 7280, 7290, 7300, 7310, 7320, 7330, 7340, 7350, 7360, 7370, 7380, 7390, 7400, 7410, 7420, 7430, 7440, 7450, 7460, 7470, 7480, 7490, 7500, 7510, 7520, 7530, 7540, 7550, 7560, 7570, 7580, 7590, 7600, 7610, 7620, 7630, 7640, 7650, 7660, 7670, 7680, 7690, 7700, 7710, 7720, 7730, 7740, 7750, 7760, 7770, 7780, 7790, 7800, 7810, 7820, 7830, 7840, 7850, 7860, 7870, 7880, 7890, 7900, 7910, 7920, 7930, 7940, 7950, 7960, 7970, 7980, 7990, 8000, 8010, 8020, 8030, 8040, 8050, 8060, 8070, 8080, 8090, 8100, 8110, 8120, 8130, 8140, 8150, 8160, 8170, 8180, 8190, 8200, 8210, 8220, 8230, 8240, 8250, 8260, 8270, 8280, 8290, 8300, 8310, 8320, 8330, 8340, 8350, 8360, 8370, 8380, 8390, 8400, 8410, 8420, 8430, 8440, 8450, 8460, 8470, 8480, 8490, 8500, 8510, 8520, 8530, 8540, 8550, 8560, 8570, 8580, 8590, 8600, 8610, 8620, 8630, 8640, 8650, 8660, 8670, 8680, 8690, 8700, 8710, 8720, 8730, 8740, 8750, 8760, 8770, 8780, 8790, 8800, 8810, 8820, 8830, 8840, 8850, 8860, 8870, 8880, 8890, 8900, 8910, 8920, 8930, 8940, 8950, 8960, 8970, 8980, 8990, 9000, 9010, 9020, 9030, 9040, 9050, 9060, 9070, 9080, 9090, 9100, 9110, 9120, 9130, 9140, 9150, 9160, 9170, 9180, 9190, 9200, 9210, 9220, 9230, 9240, 9250, 9260, 9270, 9280, 9290, 9300, 9310, 9320, 9330, 9340, 9350, 9360, 9370, 9380, 9390, 9400, 9410, 9420, 9430, 9440, 9450, 9460, 9470, 9480, 9490, 9500, 9510, 9520, 9530, 9540, 9550, 9560, 9570, 9580, 9590, 9600, 9610, 9620, 9630, 9640, 9650, 9660, 9670, 9680, 9690, 9700, 9710, 9720, 9730, 9740, 9750, 9760, 9770, 9780, 9790, 9800, 9810, 9820, 9830, 9840, 9850, 9860, 9870, 9880, 9890, 9900, 9910, 9920, 9930, 9940, 9950, 9960, 9970, 9980, 9990, 10000, 10001, 10002, 10003, 10004, 10005, 10006, 10007, 10008, 10009, 10010, 10011, 10012, 10013, 10014, 10015, 10016, 10017, 10018, 10019, 10020, 10021, 10022, 10023, 10024, 10025, 10026, 10027, 10028, 10029, 10030, 10031, 10032, 10033, 10034, 10035, 10036, 10037, 10038, 10039, 10040, 10041, 10042, 10043, 10044, 10045, 10046, 10047, 10048, 10049, 10050, 10051, 10052, 10053, 10054, 10055, 10056, 10057, 10058, 10059, 10060, 10061, 10062, 10063, 10064, 10065, 10066, 10067, 10068, 10069, 10070, 10071, 10072, 10073, 10074, 10075, 10076, 10077, 10078, 10079, 10080, 10081, 10082, 10083, 10084, 10085, 10086, 10087, 10088, 10089, 10090, 10091, 10092, 10093, 10094, 10095, 10096, 10097, 10098, 10099, 10100, 10101, 10102, 10103, 10104, 10105, 10106, 10107, 10108, 10109, 10110, 10111, 10112, 10113, 10114, 10115, 10116, 10117, 10118, 10119, 10120, 10121, 10122, 10123, 10124, 10125, 10126, 10127, 10128, 10129, 10130, 10131, 10132, 10133, 10134, 10135, 10136, 10137, 10138, 10139, 10140, 10141, 10142, 10143, 10144, 10145, 10146, 10147, 10148, 10149, 10150, 10151, 10152, 10153, 10154, 10155, 10156, 10157, 10158, 10159, 10160, 10161, 10162, 10163, 10164, 10165, 10166, 10167, 10168, 10169, 10170, 10171, 10172, 10173, 10174, 10175, 10176, 10177, 10178, 10179, 10180, 10181, 10182, 10183, 10184, 10185, 10186, 10187, 10188, 10189, 10190, 10191, 10192, 10193, 10194, 10195, 10196, 10197, 10198, 10199, 10200, 10201, 10202, 10203, 10204, 10205, 10206, 10207, 10208, 10209, 10210, 10211, 10212, 10213, 10214, 10215, 10216, 10217, 10218, 10219, 10220, 10221, 10222, 10223, 10224, 10225, 10226, 10227, 10228, 10229, 10230, 10231, 10232, 10233, 10234, 10235, 10236, 10237, 10238, 10239, 10240, 10241, 10242, 10243, 10244, 10245, 10246, 10247, 10248, 10249, 10250, 10251, 10252, 10253, 10254, 10255, 10256, 10257, 10258, 10259, 10260, 10261, 10262, 10263, 10264, 10265, 10266, 10267, 10268, 10269, 10270, 10271, 10272, 10273, 10274, 10275, 10276, 10277, 10278, 10279, 10280, 10281, 10282, 10283, 10284, 10285, 10286, 10287, 10288, 10289, 10290, 10291, 10292, 10293, 10294, 10295, 10296, 10297, 10298, 10299, 10300, 10301, 10302, 10303, 10304, 10305, 10306, 10307, 10308, 10309, 10310, 10311, 10312, 10313, 10314, 10315, 10316, 10317, 10318, 10319, 10320, 10321, 10322, 10323, 10324, 10325, 10326, 10327, 10328, 10329, 10330, 10331, 10332, 10333, 10334, 10335, 10336, 10337, 10338, 10339, 10340, 10341, 10342, 10343, 10344, 10345, 10346, 10347, 10348, 10349, 10350, 10351, 10352, 10353, 10354, 10355, 10356, 10357, 10358, 10359, 10360, 10361, 10362, 10363, 10364, 10365, 10366, 10367, 10368, 10369, 10370, 10371, 10372, 10373, 10374, 10375, 10376, 10377, 10378, 10379, 10380, 10381, 10382, 10383, 10384, 10385, 10386, 10387, 10388, 10389, 10390, 10391, 10392, 10393, 10394, 10395, 10396, 10397, 10398, 10399, 10400, 10401, 10402, 10403, 10404, 10405, 10406, 10407, 10408, 10409, 10410, 10411, 10412, 10413, 10414, 10415, 10416, 10417, 10418, 10419, 10420, 10421, 10422, 10423, 10424, 10425, 10426, 10427, 10428, 10429, 10430, 10431, 10432, 10433, 10434, 10435, 10436, 10437, 10438, 10439, 10440, 10441, 10442, 10443, 10444, 10445, 10446, 10447, 10448, 10449, 10450, 10451, 10452, 10453, 10454, 10455, 10456, 10457, 10458, 10459, 10460, 10461, 10462, 10463, 10464, 10465, 10466, 10467, 10468, 10469, 10470, 10471, 10472, 10473, 10474, 10475, 10476, 10477, 10478, 10479, 10480, 10481, 10482, 10483, 10484, 10485, 10486, 10487, 10488, 10489, 10490, 10491, 10492, 10493, 10494, 10495, 10496, 10497, 10498, 10499, 10500, 10501, 10502, 10503, 10504, 10505, 10506, 10507, 10508, 10509, 10510, 10511, 10512, 10513, 10514, 10515, 10516, 10517, 10518, 10519, 10520, 10521, 10522, 10523, 10524, 10525, 10526, 10527, 10528, 10529, 10530, 10531, 10532, 10533, 10534, 10535, 10536, 10537, 10538, 10539, 10540, 10541, 10542, 10543, 10544, 10545, 10546, 10547, 10548, 10549, 10550, 10551, 10552, 10553, 10554, 10555, 10556, 10557, 10558, 10559, 10560, 10561, 10562, 10563, 10564, 10565, 10566, 10567, 10568, 10569, 10570, 10571, 10572, 10573, 10574, 10575, 10576, 10577, 10578, 10579, 10580, 10581, 10582, 10583, 10584, 10585, 10586, 10587, 10588, 10589, 10590, 10591, 10592, 10593, 10594, 10595, 10596, 10597, 10598, 10599, 10600, 10601, 10602, 10603, 10604, 10605, 10606, 10607, 10608, 10609, 10610, 10611, 10612, 10613, 10614, 10615, 10616, 10617, 10618, 10619, 10620, 10621, 10622, 10623, 10624, 10625, 10626, 10627, 10628, 10629, 10630, 10631, 10632, 10633, 10634, 10635, 10636, 10637, 10638, 10639, 10640, 10641, 10642, 10643, 10644, 10645, 10646, 10647, 10648, 10649, 10650, 10651, 10652, 10653, 10654, 10655, 10656, 10657, 10658, 10659, 10660, 10661, 10662, 10663, 10664, 10665, 10666, 10667, 10668, 10669, 10670, 10671, 10672, 10673, 10674, 10675, 10676, 10677, 10678, 10679, 10680, 10681, 10682, 10683, 10684, 10685, 10686, 10687, 10688, 10689, 10690, 10691, 10692, 10693, 10694, 10695, 10696, 10697, 10698, 10699, 10700, 10701, 10702, 10703, 10704, 10705, 10706, 10707, 10708, 10709, 10710, 10711, 10712, 10713, 10714, 10715, 10716, 10717, 10718, 10719, 10720, 10721, 10722, 10723, 10724, 10725, 10726, 10727, 10728, 10729, 10730, 10731, 10732, 10733, 10734, 10735, 10736, 10737, 10738, 10739, 10740, 10741, 10742, 10743, 10744, 10745, 10746, 10747, 10748, 10749, 10750, 10751, 10752, 10753, 10754, 10755, 10756, 10757, 10758, 10759, 10760, 10761, 10762, 10763, 10764, 10765, 10766, 10767, 10768, 10769, 10770, 10771, 10772, 10773, 10774, 10775, 10776, 10777, 10778, 10779, 10780, 10781, 10782, 10783, 10784, 10785, 10786, 10787, 10788, 10789, 10790, 10791, 10792, 10793, 10794, 10795, 10796, 10797, 10798, 10799, 10800, 10801, 10802, 10803, 10804, 10805, 10806, 10807, 10808, 10809, 10810, 10811, 10812, 10813, 10814, 10815, 10816, 10817, 10818, 10819, 10820, 10821, 10822, 10823, 10824, 10825, 10826, 10827, 10828, 10829, 10830, 10831, 10832, 10833, 10834, 10835, 10836, 10837, 10838, 10839, 10840, 10841, 10842, 10843, 10844, 10845, 10846, 10847, 10848, 10849, 10850, 10851, 10852, 10853, 10854, 10855, 10856, 10857, 10858, 10859, 10860, 10861, 10862, 10863, 10864, 10865, 10866, 10867, 10868, 10869, 10870, 10871, 10872, 10